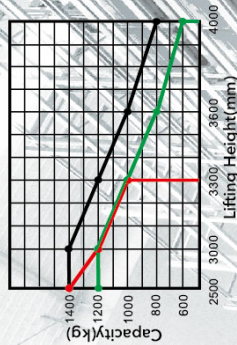


CDD12-030 CDD14-930/980 Electric Stacker

Load Curve



Configuration and performance

- Electronic power steering system, light and low noise.
- Two-way magnetic valve, three drop speed mode.
- Drive unit floating bodies with patent design.
- AC Driving system, No carbon brush, maintenance free.
- Electromagnetic regenerative braking system.
- Automatic lifting limit, proximity switch, long life.

Options

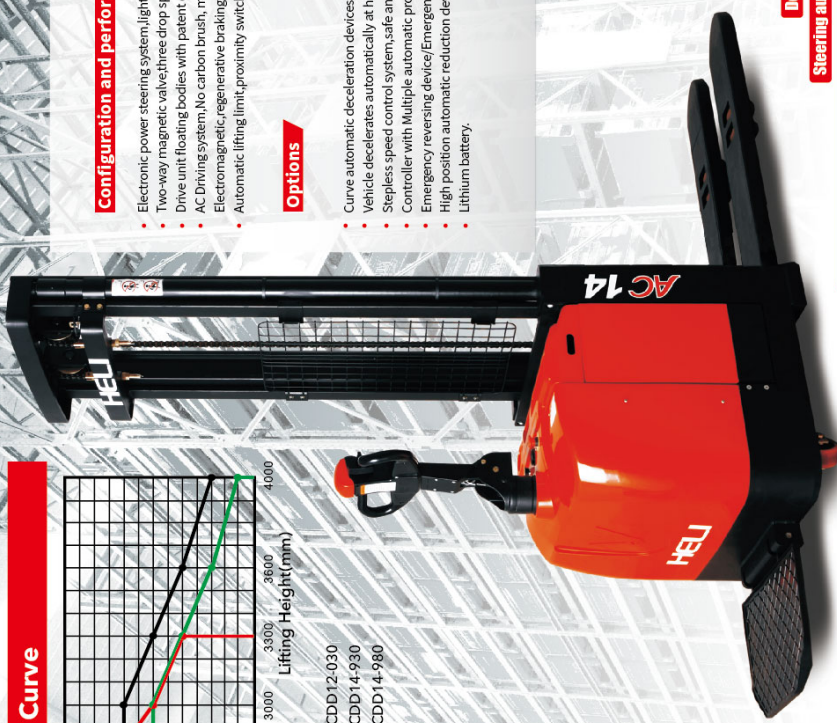
- Curve automatic deceleration device, more safe.
- Vehicle decelerates automatically at higher position.
- Stepless speed control system, safe and quiet.
- Controller with Multiple automatic protection.
- Emergency reversing device/Emergency brake switch.
- High position automatic reduction device.
- Lithium battery.

AC LEPS

Down mode at 3 speeds

Steering automatic deceleration

Truck automatically decelerates while at higher lifting position



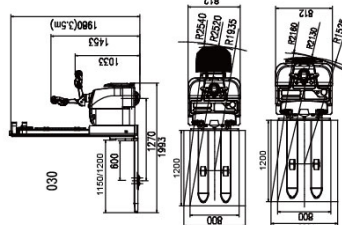
Fork-over typed stacker

Type	Lift height (mm)	Mast type	Outside width between legs (mm)	Inside width between legs (mm)
CDD12-030	2000/2500/3000/3300/3600/4000	Standard 2-STAGE	550/600/650/685	180/230/280/315
CDD14-930	1400/2000/2500/3000/3300/3600/4000	Standard 2-STAGE		
CDD14-980	2500/3000/3300	FULL FREE 2-STAGE		

CDD12-030 CDD14-930/980

Feature	CDD12-030	CDD14-930	CDD14-980
Model	CDD12-030	CDD14-930	CDD14-980
Type	Fork over	Fork over	Fork over
Mast type	Standard 2-Stage	Standard 2-Stage	Full free 2-Stage
Load capacity	1200	1400	1400
Load center	600	600	600
Wheel base	1270	1325	1325
Operating type	Walker/Stand On		
Wheels	PU	PU	PU
Wheels type	12/14	12/14	12/14
Wheel capacity/Driving wheel/Balance wheel/Rear wheel			
Dimension			
Standard lift height	2000/2500/3000/3300/3600/4000	1400/2000/2500/3000/3300/3600/4000	2500/3000/3300
Lowered fork height	90	90	90
Fork size (length/width/thickness)	1150(1220)/185/55	1150(1220)/185/55	1150(1220)/185/55
Overall length	1993/2413	2050/2470	2050/2470
Overall width	812	856	856
Max. extend height	2500/3000/3500/3800/4100/4500	1900/2500/3000/3500/3800/4100/4500	3000/3500/3800
Mast lowered height	1535/1765/1980/2135/2335/2500	1185/1535/1765/1980/2135/2335/2500	1830/2080/2180
Min. Turning radius	1525/1935	1580/1990	1580/1990
Min. Aisle width for pallets 800×1200	2130/2520	2180/2580	2180/2580
Min. Aisle width for pallets 1000×1200	2160/2540	2210/2600	2210/2600
Min. ground clearance	30	30	30
Performance			
Travel speed, laden/unladen	6/6	6/6	6/6
Lift speed, laden/unladen	130/180	130/180	130/180
Lowering speed, laden/unladen	100/200	100/200	100/120
Gradeability, laden/unladen	6/8	6/8	6/8
Electrical configuration			
Drive motor/lift motor/Steering motor	AC1.5/DC3/DC0.15	AC1.5/DC3/DC0.15	AC1.5/DC3/DC0.15
Brake		Electromagnetic/Regenerative	
Weight		Lead-acid battery	Lead-acid battery
Battery voltage/ capacity	24/210	Lithium battery (Optional)	Lithium battery (Optional)
Controller	ZAPI	ZAPI	ZAPI
Battery weight	99	ZAPI	ZAPI
Service weight with battery	1076	235	235
		1055	1206

* Details of specifications and equipment are based on information available at time of printing and may change without notice.



ANHUI HELI CO., LTD.
 ADD: NO.668 Fangxing Street, Economic Development Zone, Hefei, P.R. China
 TEL: (86 551) 63639068 (America) 63639258 (Europe) 63639358 (Asia)
 63662105 (Africa & Middle East) 63639530 (Key Accounts division)
 63662105 (Wheel loader)
 FAX: (86 551) 63639966
 WEBSITE: <http://www.heliforklift.net>
 Email: helihel@heihchina.net

AUTHORIZED DEALER